

EXPLODED VIEW

THICKNESS OPTIONS

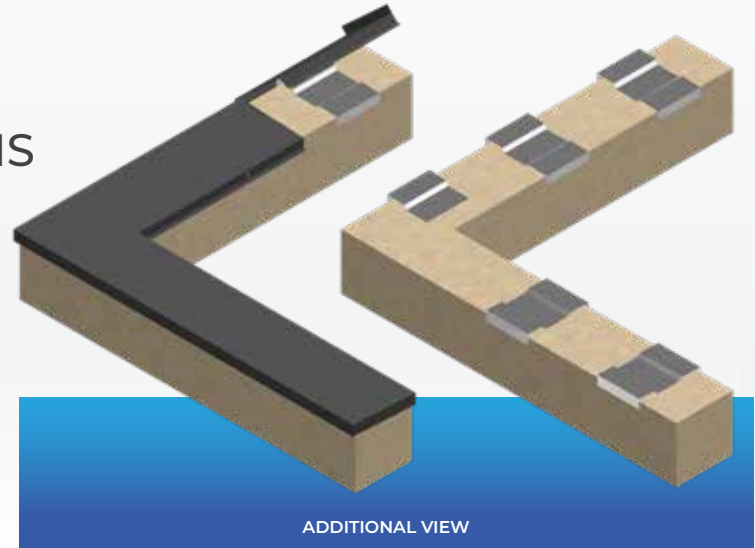
2MM & 3MM

# CAPPINGS

## ALUMINIUM SECRET-FIX SYSTEMS

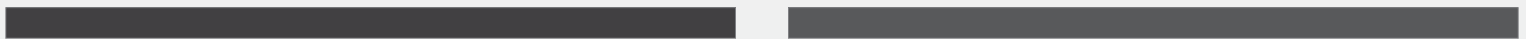
Produced from high-grade aluminium and available in a wide range of RAL colours, our cappings are manufactured in thicknesses from 2mm to 3mm and can be supplied in lengths up to 4 metres.

All aluminium cappings are produced in-house, giving us full control over quality, finish, and lead times. Once final dimensions are confirmed, we prepare detailed fabrication drawings for approval before moving into production.



ADDITIONAL VIEW

STANDARD RAL COLOURS



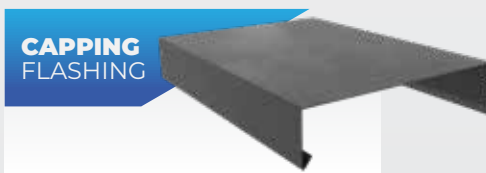
HALF BRACKET



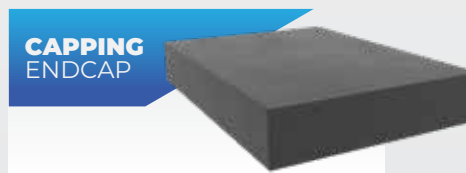
CAPPING BRACKET



FLASHING ABUTMENT



CAPPING FLASHING



CAPPING ENDCAP



CAPPING CORNER



CAPPING CONNECTOR

Aluminium secret fix cappings are designed to provide a sleek, continuous finish to parapet and boundary walls while concealing fixings for a clean and modern appearance. These cappings offer excellent weather resistance, durability, and low maintenance, making them ideal for various architectural applications.

# CAPPING DATA SHEET

Aluminium cappings from Alupress Ltd. are manufactured in-house for reliable protection and a clean finish. This datasheet outlines specifications, materials, profiles, and fixing methods.

## KEY FEATURES:

Material: High-grade aluminium  
 Finish Options: Powder coated in various colours  
 Profiles: Sloped, or custom profiles  
 Lengths: Customizable up to 4 meters  
 Thickness Options: 2mm to 3mm  
 Fixing Method: Concealed (secret fix) system 3mm aluminium brackets or 2mm thick galvanised brackets.

## TECHNICAL SPECIFICATIONS

Material Composition: Aluminium alloy 1050A  
 Standard Lengths: customisable lengths up to 4mT  
 Profile Types  
 Sloped: Standard widths from 100mm to 400mm with a standard slope  
 Custom: Tailored to specific architectural requirements  
 Finish Types: Powder-Coated: RAL colours available  
 Performance Characteristics:

## PERFORMANCE CHARACTERISTICS

Durability: High resistance to corrosion.  
 Maintenance Low maintenance, easy to clean  
 Weather Resistance: Excellent resistance to UV, rain, and temperature fluctuations  
 Installation: Concealed fixing system ensures a clean, seamless look with no visible fasteners  
 Compatibility: Suitable for use with various wall materials, including brick, stone, and rendered surfaces

## APPLICATIONS

Residential buildings: Houses, apartments.  
 Commercial buildings: Offices, retail stores, and hospitality establishments  
 Industrial buildings: Warehouses, factories, and workshops  
 Public buildings: Schools, hospitals, and gov facilities

## CUSTOMISATION OPTIONS

Dimensions: Custom widths, lengths, and profiles to match specific project. Colours: Wide range of RAL colours to match building aesthetics. Accessories: Welded corners, welded stop ends, welded upstands.

## 1. SCOPE AND PURPOSE

This guide provides detailed instructions for the installation of aluminum secret fix parapet cappings to ensure a secure, weatherproof, and visually seamless finish while accommodating thermal movement and maintaining durability.

## 2. PREPARATION

### 2.1 Site Inspection

This guide provides detailed instructions for the installation of aluminum secret fix parapet cappings to ensure a secure, weatherproof, and visually seamless finish while accommodating thermal movement and maintaining durability.

### 2.2 MATERIALS AND TOOLS

Materials:

- Aluminum secret fix cappings
- Secret fix brackets/clips
- Silicone sealant/adhesive (weatherproof & UV resistant)
- Corrosion-resistant fixings (screws or rivets)

Tools:

- Cordless drill with appropriate bits
- Spirit level ·Measuring tape ·Rubber mallet
- Cleaning materials (non-abrasive cleaner or alcohol-based solvent)
- Sealant applicator
- PPE: gloves, safety glasses

### 2.3 CLEANING

- Clean the parapet surfaces and capping sections to remove any grease, oil, or dirt.
- Allow the surfaces to dry completely before installation.

### 2.4 THERMAL MOVEMENT CONSIDERATIONS

- Allow for thermal expansion by following manufacturer recommended expansion gaps (typically 1mm per meter of capping).



# INSTALLATION GUIDE

## INSTALLATION PROCESS

### Fixing Clip Installation

Mark the position of the fixing clips along the parapet at the recommended intervals (typically 600–1000 mm centers). Secure the clips to the parapet using corrosion-resistant screws or appropriate anchors for the substrate.

### INSTALLING THE CAPPINGS

Apply 2 continuous beads of MS-polymer based adhesive sealant (Parabond 600 or similar) to the joint plate and insert to one end of the first aluminium capping.

Position the first aluminium capping section over the parapet, aligning it with the fixing bracket, ensuring a bracket is positioned at the joint, and fix to brackets using suitable self drilling screws on the inside of the parapet.

Apply 2 continuous beads of MS-polymer based adhesive sealant (Parabond 600 or similar) to the exposed end of the joint plate. Position the next capping section adjacent to the installed one, clip onto the brackets leaving the specified expansion gap and fix accordingly ensuring it aligns seamlessly.

### FINISHING

#### Final Sealing

Smooth exposed sealant with a spatula or finger dipped in soapy water for a clean, professional finish. Remove excess sealant to maintain a neat appearance.

#### Cleaning

Wipe down the capping sections with a non-abrasive cleaner to remove fingerprints, sealant residue, or dirt.

#### Inspection

Check all cappings for alignment, secure fixing, and uniform joint gaps. Confirm all joints are weatherproof and visually seamless.

### MAINTENANCE & CARE

#### Regular Inspections

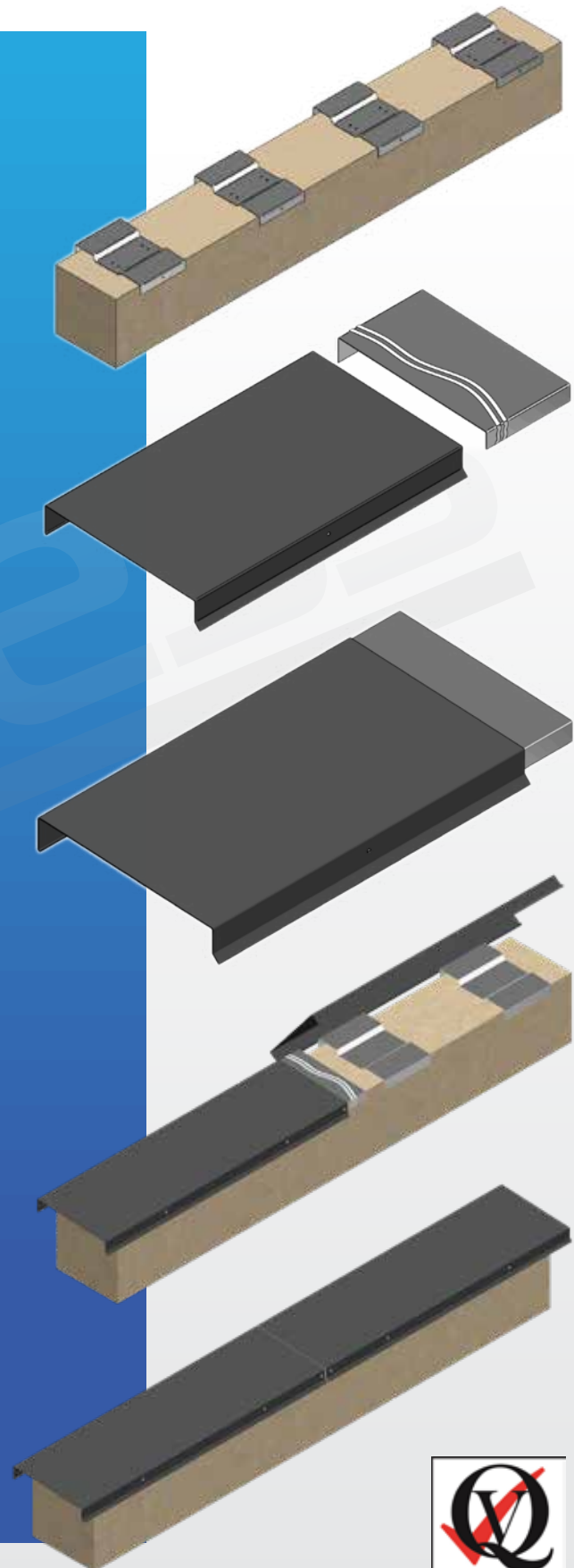
Inspect the cappings periodically for signs of wear, sealant degradation, or movement.

#### Repairs

Replace or re-seal any damaged or compromised joints as needed.

#### Cleaning

Clean the cappings regularly using non-abrasive materials to maintain their appearance and longevity.



**By following this guide, you can ensure the successful installation of aluminium secret fix cappings that are both functional and aesthetically pleasing.**



# REPAIR PROCEDURE

Secret fix systems should be dismantled by accessing the concealed brackets to avoid damage to adjacent sections. All replacement components must match the original specification, including material thickness, finish, and profile. Following repair, ensure all joints, fixings, and seals are secure to maintain weather resistance and performance.

**Repairing powder-coated aluminium involves several steps to restore the damaged area and maintain a seamless appearance. Here's a detailed procedure:**

## Assess the Damage:

**Minor Scratches:** Surface-level scratches that don't penetrate the powder coating layer.

**Deep Scratches or Chips:** Damages exposing bare aluminium.

**Extensive Damage:** Widespread wear, peeling, or corrosion.

## Prepare the Area

**Clean:** Wash the damaged area with warm soapy water to remove dirt, grease, or debris. Rinse thoroughly and let it dry.

**Decontaminate:** Use a mild solvent to remove any remaining oils or residues.

**Sand:** Lightly sand the damaged area with fine-grit sandpaper (e.g., 320-400 grit) to smooth edges and create a surface for adhesion. Feather the edges of the powder coating to blend it into the surrounding area

## Treat Bare Aluminium (If Exposed)

**Remove Oxidation:** If the bare aluminium shows signs of oxidation, use fine sandpaper or a scouring pad to clean it.

**Apply a Primer:** Use a suitable aluminium primer to protect against corrosion and ensure adhesion of the touch-up material.

## Touch-Up Application

### Small Scratches:

Use a touch-up pen or spray paint designed for powder-coated surfaces.

Apply the paint in thin layers, allowing each coat to dry as per the product instructions.

### Chips or Deep Scratches:

Apply a filler or repair compound if the damage is substantial, sanding it smooth after curing.

Use a touch-up spray or brush-on paint that matches the powder coating colour. Blend the edges with light sanding between coats for a seamless finish.

## Cure the Repair

Allow the paint or repair compound to dry completely, following the manufacturer's recommendations for drying time.

## Inspect and Polish

Inspect the repair for consistency in texture and colour.

Buff the repaired area lightly to blend it into the surrounding surface.

## Seal and Protect

Apply a clear protective coat to enhance durability and protect the repair from UV exposure and wear

## Tips:

**Colour Match:** Obtain touch-up paint that matches the original powder coating. Contact the original supplier if possible.

**Environmental Conditions:** Perform the repair in a controlled environment to avoid dust or moisture interference.

**Professional Help:** For extensive or highly visible damage, consult a professional surface repair specialist.

## Clean Up:

Remove any excess sealant or debris.

## Maintenance Instructions:

Clean with mild soap and water using a soft cloth or sponge.

Avoid abrasive cleaners or tools that may scratch the surface.

Inspect periodically for any signs of damage or wear and repair as necessary.

[This data sheet provides essential information about our aluminium window sills, ensuring you have all the details needed for your project. For further assistance or to place an order, please contact our customer service team.](#)