

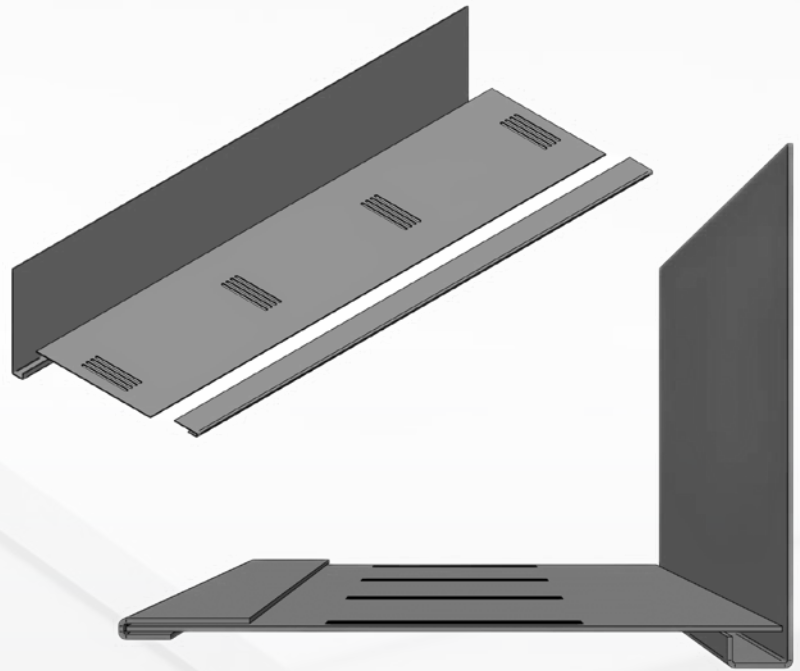


alupress

www.alupress.ie

FASCIA & SOFFIT

Manufactured in-house, our aluminium fascia and soffit systems deliver clean lines, durability, and low maintenance for residential and commercial projects. Seamless detailing, precision folding, and consistent powder coating ensure a sharp finish every time. Designed for modern buildings, supplied ready to install, with reliable lead times across Ireland and UK.



STANDARD RAL COLOURS



FASCIA

**FASCIA
BOARD**

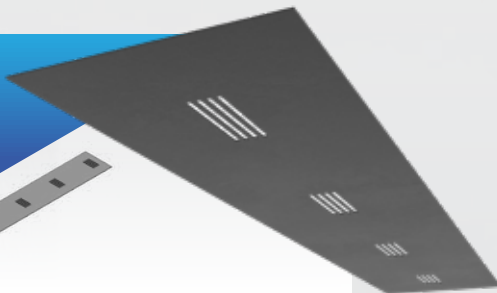
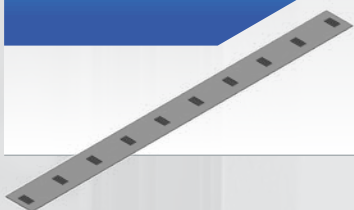


**CORNER
COVER**



SOFFIT

**SOFFIT
VENTED**



JBAR



FASCIA & SOFFIT INSTALLATION GUIDE

Aluminium fascia and soffit systems are designed to provide robust, durable, and aesthetically pleasing finishes to roof edges. These systems protect the roof and walls from weather damage while offering ventilation and a polished appearance, enhancing long-term building performance and reducing maintenance requirements

Key Features:

- Material:** High-grade extruded aluminium
- Finish Options:** Powder coated in various colours
- Profiles:** Available in flat, vented, and custom profiles
- Lengths:** Customisable up to 4 meters
- Thickness Options:** 1.0mm to 3mm
- Environmental Resistance:** Corrosion-resistant, UV-stable, and weatherproof

Technical Specifications:

- Material Composition:** Aluminium alloy 1050A
- Standard Lengths:** 3m & custom lengths upto 4m

Profile Types

- Fascia:** Standard widths from 100mm to 400mm
- Soffit:** Available in solid and vented options, standard widths from 150mm to 300mm
- Custom:** Tailored to specific architectural requirements
- Finish Types:** Standard Black RAL 9005 / Anthracite RAL 7016 / White RAL 9010
- Powder-Coated:** RAL colours available

Performance Characteristics

- Durability:** High resistance to corrosion.
- Maintenance:** Low maintenance, easy to clean
- Weather Resistance:** Excellent resistance to UV, rain, and temperature fluctuations.
- Installation:** Easy to install with standard tools and accessories
- Compatibility:** Suitable for use with various roofing systems, including tiled, slate, and metal roofs.

Applications

- Residential buildings:** Houses, apartments.
- Commercial buildings:** Offices, retail stores, and hospitality establishments
- Industrial buildings:** Warehouses, factories, and workshops
- Public buildings:** Schools, hospitals, and gov facilities

Customisation Options

- Dimensions:** Custom widths, lengths, and profiles to match specific project requirements
- Colours:** Wide range of RAL colours to match building aesthetics
- Accessories:** Matching corner pieces, joiners, and end caps available

Installation Guidelines:

1. Measure and cut the aluminium fascia and soffit panels to the required length.
2. Prepare the substrate to ensure it is clean, dry, and free from debris.
3. Attach fascia boards to the roof edges using appropriate fasteners.
4. Install soffit panels, ensuring proper ventilation if using vented profiles.
5. Secure soffit panels to the fascia board and wall with screws or clips.
6. Seal all joints and edges with appropriate sealant to ensure a watertight installation.
7. Attach any required end caps, corner pieces, or joiners.

Maintenance Instructions

Clean with mild soapy water using a soft cloth. Avoid abrasive cleaners/tools that may harm surface. Inspect periodically for any signs of blockage, damage, or wear and clear debris as necessary.

This data sheet provides essential information about our aluminium fascia and soffit systems, ensuring you have all the details needed for your project. For further assistance, please contact our customer service team.

